

291

# DIE STADT.

## LIED

aus

Fr. Schubert's Schwanengesang.

für das **Piano-Forte** übertragen

VON

# R. WRSZK.

Eigenthum des Verlegers.

N<sup>o</sup> 1.

N<sup>o</sup> 7751.

Eingetragen in



das Verbins-Archiv.

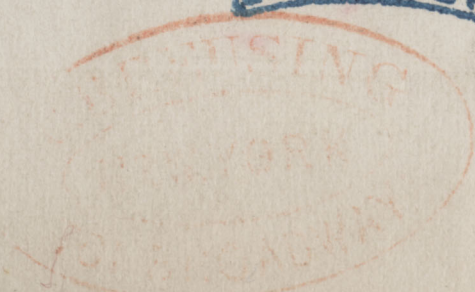
Preis  $\frac{45 \text{ C.M.}}{12 \text{ gr}}$

Wien, bei Tobias Haslinger,  
k.k. Hof- u. priv. Kunst- u. Musikalienhändler,  
am Graben N<sup>o</sup> 618.

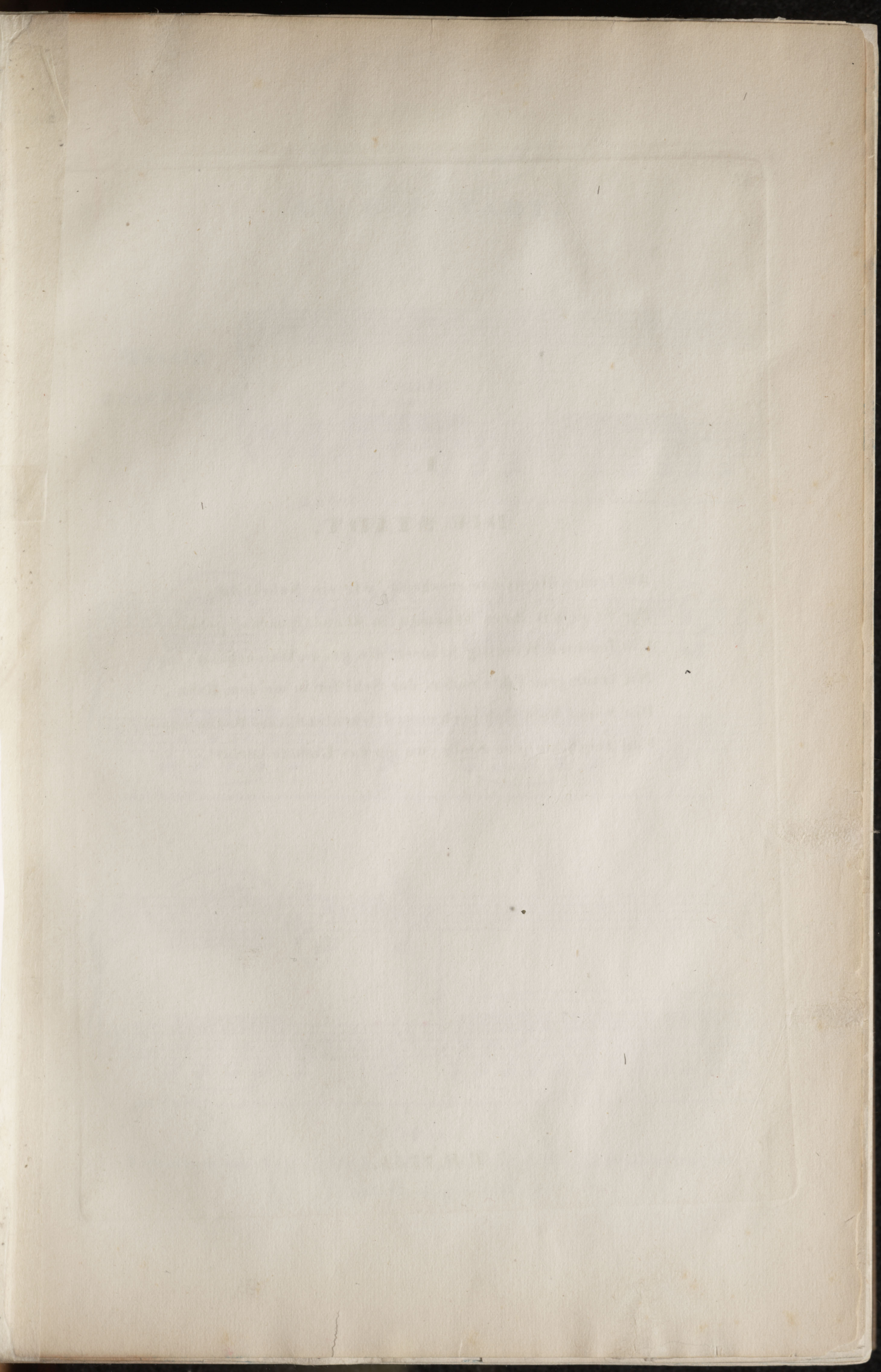
Paris, bei Schlesinger.

**G. SCHIRM  
SUCCESSOR**

London, bei Cooks & Co.









## 1.

**DIE STADT.**

Am fernen Horizonte erscheint, wie ein Nebelbild,  
Die Stadt mit ihren Thürmen, in Abenddämmerung gehüllt.  
Ein feuchter Windzug kräuselt die graue Wasserbahn;  
Mit traurigem Takte rudert der Schiffer in meinem Kahn.  
Die Sonne hebt sich noch einmal leuchtend vom Boden empor,  
Und zeigt mir jene Stelle, wo ich das Liebste verlor.





### N<sup>o</sup>. 1. DIE STADT.

Mässig  
geschwind.

*con Pedale  
sotto voce*

ga basso

*pp*

ga basso

ga basso

(7751)

Eigenthum und Verlag der k.k. Hof-Kunst- und Musikalienhandlung des  
Tobias Haslinger in Wien.



(leise deklamirt)

*mf* \* die Begleitung immer *p* und *stacc* :

ga

rall:

(den Takt immer sehr markiren)

*pp*

*p*

ga

Piano à 6 Octaves



den Gesang *mf* *ten:*

*ga* *loco*

*Piano a 6 Octaves*

*ten:*

This system contains the first system of music. It features a grand staff with three staves. The top staff has a treble clef and contains a melodic line with slurs and accents. The middle staff has a bass clef and contains a more complex melodic line with slurs and accents. The bottom staff has a bass clef and contains a rhythmic accompaniment. The text 'den Gesang' is written above the top staff, with 'mf' and 'ten:' below it. The text 'ga' is written below the middle staff, and 'loco' is written below the bottom staff. The instruction 'Piano a 6 Octaves' is written below the bottom staff. The text 'ten:' appears again below the middle staff.

*sempre con Ped:*

*ten:*

*ten:*

This system contains the second system of music. It features a grand staff with three staves. The top staff has a treble clef and contains a melodic line with slurs and accents. The middle staff has a bass clef and contains a more complex melodic line with slurs and accents. The bottom staff has a bass clef and contains a rhythmic accompaniment. The instruction 'sempre con Ped:' is written above the top staff. The text 'ten:' appears below the middle staff and below the bottom staff.

*ga* *loco*

*poco a poco cresc:*

*ten:*

This system contains the third system of music. It features a grand staff with three staves. The top staff has a treble clef and contains a melodic line with slurs and accents. The middle staff has a bass clef and contains a more complex melodic line with slurs and accents. The bottom staff has a bass clef and contains a rhythmic accompaniment. The text 'ga' is written below the middle staff, and 'loco' is written below the bottom staff. The instruction 'poco a poco cresc:' is written above the middle staff. The text 'ten:' appears below the middle staff and below the bottom staff.



ga..... loco

ga..... loco

*molto rinforz :*

This system contains two systems of music. The first system has a treble staff with a melodic line marked 'ga..... loco' and a bass staff with a complex rhythmic accompaniment. The second system continues the melodic line in the treble staff, also marked 'ga..... loco', and features a bass staff with a tremolo effect, indicated by the marking 'trem:'. The dynamic marking 'molto rinforz :' is placed between the two systems.

ga..... loco

*trem :*

This system consists of two staves. The treble staff has a melodic line marked 'ga..... loco'. The bass staff features a tremolo effect, indicated by the marking 'trem:'. The music is complex and rhythmic.

*accelerando*

*fff*

*Piano à 6 Oct:*

This system contains two systems of music. The first system has a treble staff with a melodic line and a bass staff with a complex rhythmic accompaniment. The dynamic marking 'accelerando' is placed above the treble staff. The second system continues the melodic line in the treble staff, marked 'fff', and features a bass staff with a tremolo effect. The marking 'Piano à 6 Oct:' is placed below the bass staff.



*precipitato*

*precipitato*  
8a.....loco

*molto ener = gico e deciso*  
(den Takt immer sehr markiren)\*

*Ossia più facile.*

*molto ener = gico e deciso*

8a.....loco  
4 3 2 1 1 3 2 1 1

*Ossia più facile.*



8<sup>a</sup>..... loco

*Ossia più facile*

This system contains two systems of music. The top system has a treble staff with a melodic line and an alto/bass staff with accompaniment. The bottom system is a simplified version of the top system, with fewer notes and some fingerings indicated (1, 2, 4). Both systems include dynamic markings like *ff* and *f*, and various ornaments and slurs.

*il più Presto possibile*

8<sup>a</sup>..... loco

*fff*

*molto rinforz :*

This system features a treble staff with a very fast, dense melodic line, possibly a tremolo or a rapid scale. The bass staff provides a steady accompaniment. The dynamic marking *fff* is prominent, along with the instruction *molto rinforz :*. There are also some slurs and ornaments.

*Ossia più facile*

8<sup>a</sup>..... loco

*fff*

This system is a simplified version of the second system. The treble staff has a much slower and simpler melodic line, while the bass staff remains the same. It includes the dynamic marking *fff* and some slurs.



*gabasso*

*sempre più dim:*

*8a*

*8a*